



WA-125U

Single Channel UHF Wireless Portable PA System



SERVICE INFORMATION

(U.S.) If you are experiencing operation problem with your system, check out the support page on the Nady website: www.nady.com for help and for contacting the Nady Service Department. Should your wireless System require service, you must contact the Nady Service Department at (510) 652-2411 for a Return Authorization (R/A) Number and a service quote (if out of warranty). Make sure the R/A Number is clearly marked on the outside of the package. Cashier's check or money is enclosed (If not prepaid with credit card), and ship the unit prepaid to: Nady System Inc., Service Department, 6701 Shellmound Street, Emeryville, CA 94608. Include a brief description of the problem you are experiencing, for service of a unit under warranty follow the instruction of your Warranty Card regarding Warranty Service.

(International) For service, please contact the NADY distributors in your country through the dealer from whom you purchase this product.

DO NOT ATTEMPT TO SERVICE THIS UNIT YOURSELF, AS THAT WILL VOID YOUR WARRANTY.



NADY SYSTEMS, INC.

6701 Shellmound Street • Emeryville, CA 94608
Tel: 510.652.2411 • Fax: 510.652.5075 • www.nady.com

OWNER'S MANUAL

TABLE OF CONTENTS

INTRODUCTION	2
USING THIS MANUAL	2
SYSTEM FEATURES	3
WA-125U CONTROL AND CONNECTIONS	4
WA-125U OPERATING INSTRUCTIONS	6
UH-4 HANDHELD MICROPHONE TRANSMITTER	8
UB-4 LAVALIER/HEADMIC BADIYPACK TRANSMITTER	10
LINK-4 PLUG-IN TRANSMITTER	13
SPECIFICATIONS	15
SERVICE INFORMATION	BACK COVER

INTRODUCTION

Thank you for purchasing a Nady WA-125U Wireless UHF Portable P.A. — and congratulations on your choice. The WA-125U is the most compact of the popular line of Nady wireless P.A.'s. Ideal for many applications, including use in classrooms, conference/meeting rooms, churches, health clubs and small auditoriums, it is powerful, yet lightweight and easily portable. We are sure you will find this versatile system a powerful and useful tool for your presentations.

USING THIS MANUAL

This booklet gives instructions for the operation of the WA-125U wireless portable P.A., including handheld, lavalier, and Headmic™ systems. Please read the instructions for your system completely before operating this unit. This manual will first list the features of the WA-125U and then will take you step by step to show you how to operate your new system. After reading the receiver instructions, turn to the section of the booklet that covers the type of transmitter used with your new system. Each section will give you detailed operating instructions. Also included in this manual are system specifications and servicing information.

SPECIFICATIONS

AMPLIFIER SPECIFICATIONS

Audio Output Power	20W (MAX)
Speaker Load	4 Ohms (6-1/2 inch Speaker)
Supply Voltage	External AC adaptor or DC (12-15V)/1.2A Internal Power 8xD alkaline or 12V/1.2A rechargeable battery
Power Consumption	40VAC
Connectors	AC/DC in, 1/4" (6.3 mm) unbalanced MIC/AUX/REC jacks
Input Sensitivity MIC, AUX	18mV, 132mV
REC output level	360mV
Frequency Response	50Hz to 20kHz +/-3dB
Total Harmonic Distortion	<1% THD, normal
Signal-to-Noise Ratio (at rated output)	-75dB
Tone Control Range	+/-5dB (BASS 100Hz/TREBLE 10kHz)
Volume/Level Controls	MICS, AUX, ECHO, BASS/TREBLE
9V battery Charger Current	5-70mA DC
Dimension	8.3" x 10.6" x 5.4" (211 x 270 x 137mm)
Weight	5.3lbs (2.4kg)

WIRELESS RECEIVER SPECIFICATIONS

Frequency Response	100Hz-16kHz, -3dB
Harmonic Distortion	<0.6% THD, normal
Signal-to-Noise Ratio (REC out)	-80dB
RF Carrier Frequency	Single UHF Frequency (797-805MHz range)
Frequency stability	+/- 0.005% Crystal Controlled
Modulation	FM (F3E), +/-20kHz normal
Unwanted Signal Rejection	60dB image and spurious
Squelch Controls	External adjustable (-65dBm/Min, -95dBm/Max)
LED Indicators	RF ON (GREEN LED)
Antennas	4.0" (10.2 cm) Internal antenna
Operating Range	Up to 200 ft. typical (depending on site conditions) Up to 300+ feet (optimum line-of-sight)

TRANSMITTER SPECIFICATIONS

Models Available	UH-4 Handheld, UB-4 Bodypack, and LINK 4 SNAP-ON transmitters
RF Output Power	+14dBm (25mW normal), +17dBm (50mW maximum allowed by FCC)
Harmonic/spurious	-50dBc normal
Antenna Type	UH-4: Integral. UB-4: External permanent attached LINK 4: Integral into hardwire Mic
Controls	Transmitter ON/Mute/OFF switch, Audio Input level control, Phantom Power On/Off (LINK 4)
Audio Input Levels	UH-4: 24mV. LINK 4: 24mV, UB-4: 225mV (Instr.), 310mV (HM), 75mV (Lav.)
Impedance	UH-4: 3.3kΩ. LINK 4: 360Ω, UB-4: 500kΩ (Instr.), 2kΩ (HM/Lav.)
Connector	UB-4: 3.5mm locking jack, LINK 4: XLR with 9V Phantom power
Indicator	Power and Low Battery LEDs
Battery Type	9V alkaline or rechargeable battery
Battery Life	8-10 Hours normal
Dimensions	UH-4: 9.5" x 2.0" [L / Dia.] (24.13 cm x 5.08 cm) UB-4: 2.5" x 4.25" x 1.0 [W / D / H] (6.35 cm x 10.80 cm x 2.45 cm) LINK-4: 1.5" x 4.5" x 1.5" [W / D / H] (3.81 cm x 11.43 cm x 3.81 cm)
Weight (w/o batteries)	UH-4: 6.6 oz (187 g), UB-4: 3.1 oz (88 g), LINK 4: 2.6 oz (80 g)

Specifications and design subject to change for improvement purposes without prior notice.

LINK 4™ PLUG-IN TRANSMITTER

Level Trim Adjust

For optimum performance, an **INPUT SELECT SWITCH (44)** is provided. You could select the switch to LO/MED or HI gain setting depending to your microphone use. Depending on the average distance between vocalist's mouth and microphone, you can adjust the level for your application. Factory setting is MED for hardwire dynamic microphone. This is a setting to be used in most typical close microphone applications. Set for maximum possible gain and headroom without noticeable distortion of the high level peaks. Experiment and set for maximum possible gain without audible distortion on the high level peaks.

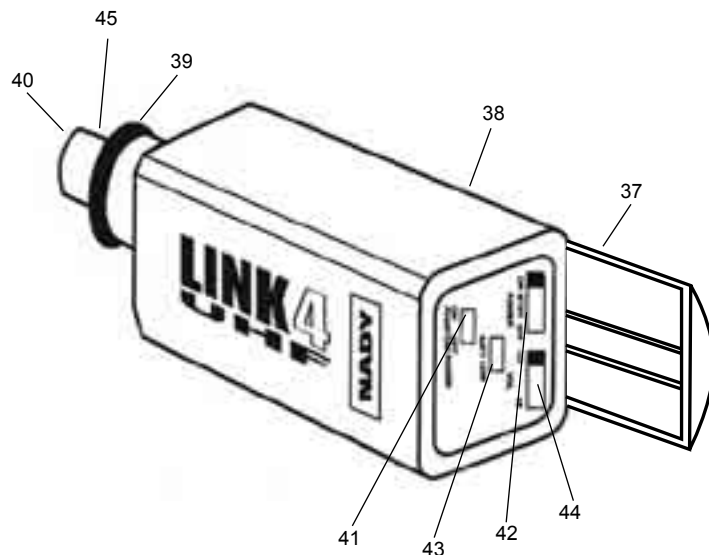
Receiver Volume Controls Adjust

The PA sound output level is control by the volume control MIC/TS knob. If feedback (howling sound) occurs, try first turning own the **TREBLE CONTROL (7)**. If feedback still is present, try turning down the **VOLUME (6)** or repositioning the WA-125U with respect to the wired or wireless mic being used.

The bodypack transmitter is now ready to use. The RF ON indicator on the receiver should now be on, indicating a received signal from the transmitter. When ready to speak, slide the **OFF/STANDBY/ON SWITCH (42)** to the ON position. Adjust the volume of the receiver as outlined in the Receiver Operating Instructions section: Operating the WA-125U.

Notes:

- Selecting **LOW** gain setting can compromise the signal-to-noise and it is not recommended.
- The microphone ball on your hardwire microphone functions as an integral antenna. For proper operation, it should not be cover or touch during operation.
- Observe care in selecting P.A. volume, transmitter location and speaker placement so that acoustic feedback (howling or screeching) will be avoided.



SYSTEM FEATURES

WA-125U Receiver/Amplifier

- Powerful 20W audio output
- Operation in the wide-open, uncluttered upper UHF band (available on single frequencies in range 797-805MHz) for optimum operating range and freedom from interference
- Built-in echo/reverb
- 1/4" unbalanced input jacks: 1 MIC, 1 AUX; one 1/4" unbalanced RECORD OUT; treble and bass controls
- Wireless system features noise reduction companding circuitry for quietest operation with a wide dynamic range.
- Available with choice of UH-4 or Link-4 handheld mic, UB-4 lavalier/headset mic transmitters
- External AC, DC (12-15V) or internal battery powered (8 X "D" alkaline or rechargeable batteries)
- Optional RB-120 (12-15V) internal rechargeable battery available
- Mountable with optional MST-4B aluminum tripod stand
- Internal charging ports for transmitter 9V (Ni-Cad or Ni-MH) rechargeable batteries
- Small and lightweight—only 8.3" x 10.6" x 5.4" (211 x 270 x 137mm) and 5.3 lbs. (2.4 Kg)

UH-4 Handheld Microphone Transmitter

- Nady DM-10D neodymium cartridge delivers transparent vocals, maximum feedback rejection and minimal handling noise
- OFF/MUTE/ON switch for ease of use
- Unique screw-on battery compartment for quick pop-in battery replacement—uses standard 9V alkaline battery
- Single LED indicator flashes once for unit on; lights steady for low battery alert
- Input level control for optimum sound adjustment
- Rugged ABS housing with integral antenna

UB-4 Bodypack Transmitter

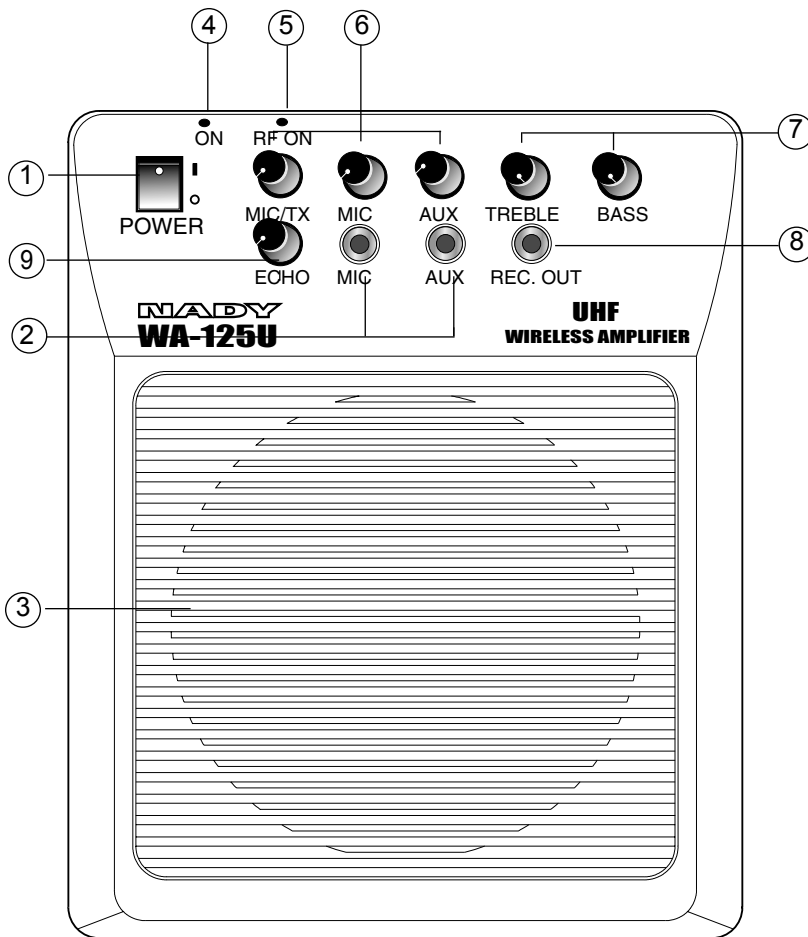
- Compact bodypack with screw on jack for instrument or lavalier microphone input
- OFF/MUTE/ON switch for ease of use
- Unique sliding battery compartment for quick pop-in battery replacement—uses standard 9V alkaline battery
- Single LED indicator flashes once for unit on; lights steady for low battery alert
- Input level control for optimum sound adjustment (LT/HM)
- Rugged ABS housing with external antenna

LINK 4™ Plug-In Transmitter

- Compact microphone transmitter that converts any dynamic XLR hardwired microphone to wireless operation
- OFF/MUTE/ON switch for ease of use
- Unique sliding battery compartment for quick pop-in battery replacement—uses standard 9V alkaline battery
- Single LED indicator flashes once for unit on; lights steady for low battery alert
- Audio LO/MED/HI gain selection for optimum sound
- Selectable 9V DC phantom powering for lavalier condenser microphone operation
- Standard locking 3-pin connector with adjustable threaded ring to provide secure connection to any XLR handheld direct or to lavalier microphone cable
- Lightweight, ABS housing with integral antenna

WA-125U CONTROLS & CONNECTIONS

1. Power ON/OFF switch
2. MIC and AUX signal input jacks
3. 6.5" round speaker
4. Power ON LED indicator
5. RF ON transmitter signal reception LED indicator
6. MIC/TX, MIC, AUX Volume controls
7. BASS-TREBLE Tone controls
8. RECORD output jack for recording or additional amplification
9. ECHO level control of echo/reverb in the channel signal



LINK 4™ PLUG-IN TRANSMITTER

Transmitters Set Up

The LINK-4 transmitter requires a single 9V battery to operate. To open the battery compartment, slide **BATTERY DOOR (37)** downward to open the cover, exposing the **BATTERY HOLDER (38)**. Insert a fresh 9V battery according to the correct polarity as indicated on the transmitter body. Slide back the door onto the original position. Make sure the cover is secured completely. Fresh Alkaline batteries can last up to 10 hour of operation, but in order to ensure optimum performance, it is recommended that the batteries should be replaced after 6-8 hours of use.

Handheld Microphone Installation

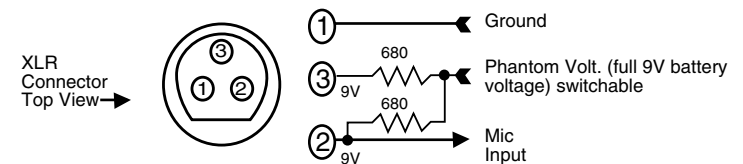
- Step 1 Rotate the transmitter's threaded **LOCKING RING (39)** counter-clockwise inward the transmitter body until it stops.
- Step 2 Hold your mic in one hand and the LINK 4 in other.
- Step 3 Place your mic into the **XLR CONNECTOR (40)** and push your mic all the way down until a click sound.
- Step 4 Lock the mic into place with the adjustable threaded **LOCKING RING (39)** by rotating the ring clockwise, to the top of the transmitter
- Step 5 To release the **XLR CONNECTOR (40)**, turn the treaded **LOCKING RING (39)** counter-clockwise and press the **RELEASE BUTTON (45)**.

Lavalier Microphone Installation

You will need a male XLR to mini male XLR adaptor (Switch-Craft TA-4 or equivalent) to use a lavalier microphone per the installation instructions. Then plug the lavalier microphone's mini male XLR into the adaptor. The **PHANTOM POWER SWITCH (41)** should be turned ON for use with a condenser lavalier mic which requires external phantom powering.

Note: The lavalier microphone you are using must terminate with a mini XLR or full XLR connector and confirm to the pin assignments shown below. If they do not, the lavalier mic may not work with the LINK 4. If you have any questions, please contact your Nady dealer or Nady Systems Service Department.

The pin assignments on the LINK 4 XLR connector are as shown:

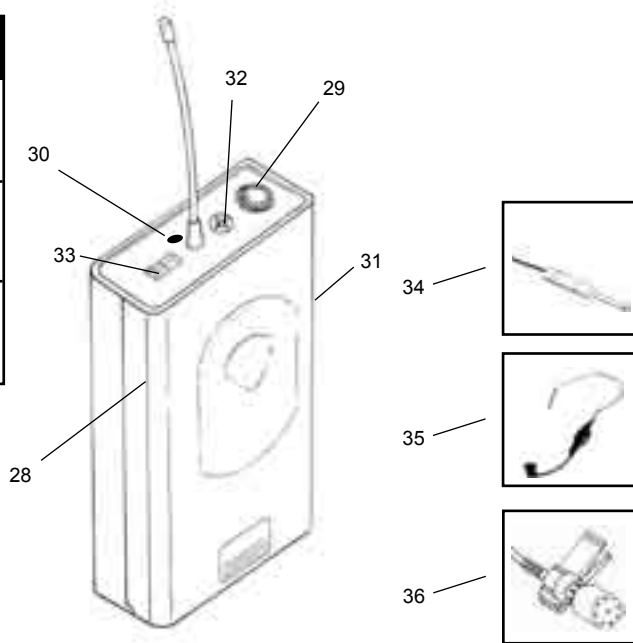


Microphone Operation

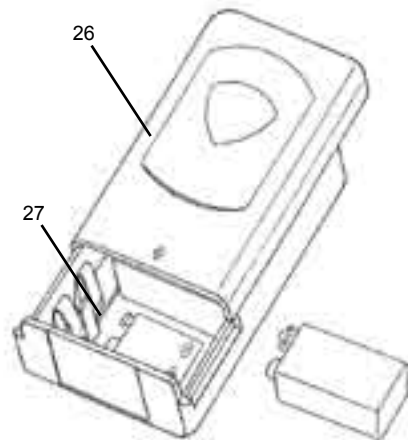
To turn it on, slide the **OFF/STANDBY/ON SWITCH (42)** to the STANDBY position first (transmitter on, audio muted) or the ON position (transmitter and audio both on). You could also use your hardwire microphone audio mute switch afterward. The **BATT LOW INDICATOR LED (43)** will give a single flash in red, indicating usable battery strength. In case of dead or low battery, both LEDs will either not go on at all or will stay on continuously, indicating that the battery should be replaced with a fresh one. To preserve battery life, turn the transmitter off when not in use. To turn off, slide the **OFF/STANDBY/ON SWITCH (42)** to OFF position. No LEDs will light up. The unit is now off.

UB-4 BODYPACK MICROPHONE TRANSMITTER

INPUT SELECTOR SWITCHES	
Instrument	HL G G H L
Headworn	HL G G H L
Lavalier	HL G G H L

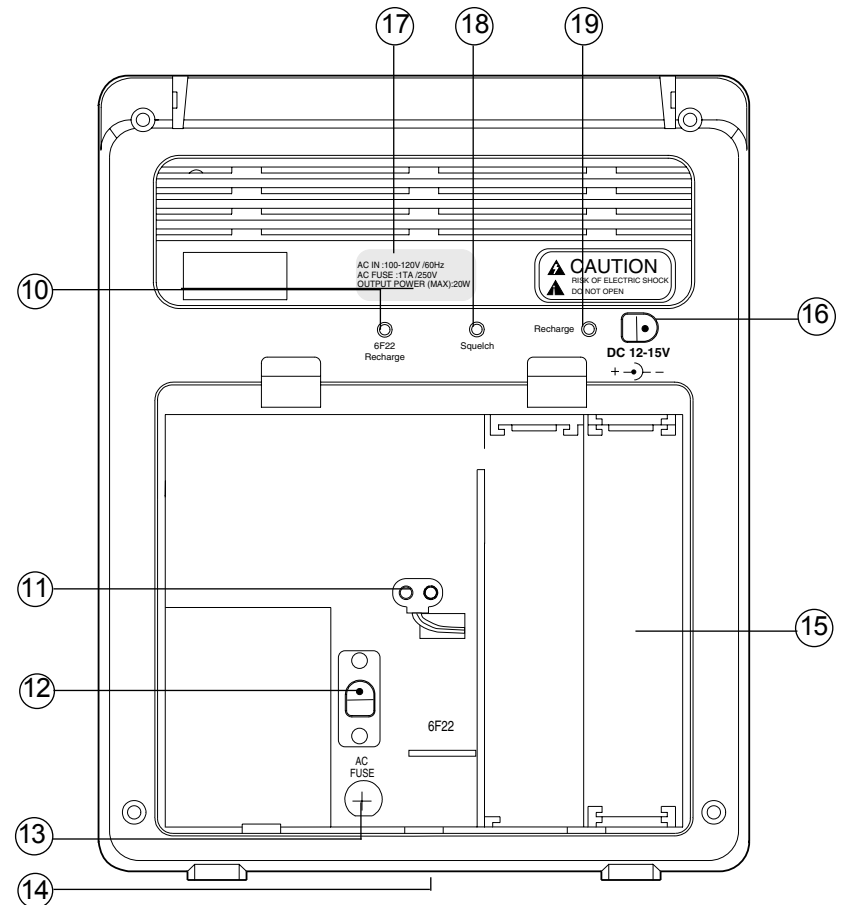


Opening Battery Compartment



WA-125U CONTROLS & CONNECTIONS

- Charging LED indicator for transmitter 9V rechargeable battery
- Battery charger connector for one 9V transmitter battery
- AC power adaptor input socket
- AC adaptor input fuse
- Mounting hole for use with optional MST-4B aluminum tripod stand
- Battery compartment for 8 X "D" for batteries operation
- External DC input jack
- Electrical specifications label
- RF mute threshold (squelch) adjust
- Battery charging LED indicators for internal optional rechargeable RB-120 (12-15V) DC charging mode



WA-125U OPERATING INSTRUCTIONS

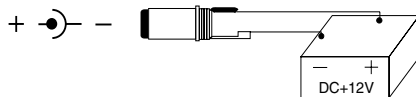
Powering the WA-125U

AC POWER (12): Plug the AC adaptor to a wall outlet then insert the plug into the AC power adaptor input socket

(Note: Before connecting to AC power, make sure the working voltage of your WA-125U, either 115V AC or 230 V AC, as supplied and indicated on your unit (20) correctly matches your local AC power.)

INTERNAL OR EXTERNAL DC POWER (16): The WA-125U may also be DC powered internally with a 12V/1.2A rechargeable Gel-cell or using the optional external RB-120 (12-15V) DC power supply plugged into the **DC INPUT JACK (16)**

(Note: To avoid damaging your unit's power supply electronics, make sure that the DC input has the correct polarity: positive center conductor and negative sleeve)



Attention: The DC INPUT JACK (16) will automatically switch between external DC or the internal battery pack (8 X "D" cells). Inserting the external DC plug will automatically disconnect the internal DC power. This prevents damage to the internal batteries.

INTERNAL POWER (15): The WA-125U can also be powered by the internal (8 X "D" cells) batteries.

(Note: Insert the batteries with correct polarity as marked. For longest operation, use only alkaline batteries.) Replace the batteries when the output audio sounds muddy or distorted and has lower volume or the range of the wireless shortens.

Operation

Before switching on the unit, make sure that the **VOLUME CONTROLS (6)** are off or at minimum levels and that both of the **TONE CONTROLS (7)** are in the center and the **ECHO (9)** at minimum position. This will prevent possible loud noises or damage to the speaker when the unit is turned on. Switch the **POWER ON/OFF (1)** on the unit to ON. The **POWER ON INDICATOR (4)** will light red to show that the system is on. The RF ON will light green to show the RF signal is received. After the signal and/or the wireless mic are turned on, adjust the **VOLUME (6)**, **TONE (7)** and **ECHO (9)** levels as desired

The **MIC INPUT (2)** can be connected to a wired microphone or other such sound source. The audio level is controlled by the **MIC VOLUME (6)**. The **AUX INPUT (2)** can be connected to a cassette or CD player or other such sound source. The audio level is controlled by the **AUX VOLUME (6)**. The **REC OUT (8)** can be connected to a recording device input or to the input jack of a power amplifier to further amplify and enlarge the audio power. The output is varied by the **VOLUME CONTROLS (6)**.

The **BASS** and **TREBLE CONTROLS (7)** are used to decrease (turn left) or increase (turn right) the frequency response for the final PA output.

They also help to reduce high or low frequency audio feedback during operation.

The **ECHO VOLUME (9)** is used to adjust the sound effect to the PA system. The ECHO function is only available when the MIC (wire mic) or MIC/TX (wireless mic) are used.

The **RF MUTE (Squelch) TRIMPOT (18)** can be used to eliminate RF interferences during wireless operation. This is most useful for making sure that when the PA is on the mic transmitter is turned off there are no noises or radio interferences heard from the live PA, i.e. the audio is fully muted. *(Note: This control will not eliminate interference from other radio sources operating on the*

UB-4 BODYPACK MICROPHONE TRANSMITTER

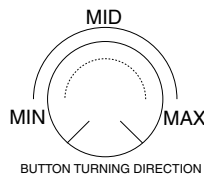
Receiver Volume Controls Adjust

The PA sound output level is control by the volume control MIC/TX knob. If feedback (howling sound) occurs, try first turning own the **TREBLE CONTROL (7)**. If feedback still is present, try turning down the **VOLUME (6)** or repositioning the WA-125U with respect to the wired or wireless mic being used.

The bodypack transmitter is now ready to use. The RF ON indicator on the receiver should now be on, indicating a received signal from the transmitter. When ready to speak, slide the **OFF/STANDBY/ON SWITCH (33)** to the ON position. Adjust the volume of the receiver as outlined in the Receiver Operating Instructions section: Operating the WA-125U.

Notes:

- Turning down the gain too much can compromise the signal-to-noise and it is not recommended.
- The microphone has an external flexible wire antenna. For proper operation, it should not be cover or touch during operation.
- Observe care in selecting P.A. volume, transmitter location and speaker placement so that acoustic feedback (howling or screeching) will be avoided.



UB-4 BODYPACK MICROPHONE TRANSMITTER

Transmitters set up

The UB-4 transmitter requires a single 9V battery to operate. To open the battery compartment, snap open the **BATTERY DOOR COVER (26)**, exposing the **BATTERY HOLDER (27)**. Insert a fresh 9V battery according to the correct polarity as indicated on the transmitter body. Snap the cover back onto the bodypack. Make sure the cover is secured completely. Fresh alkaline batteries can last up to 10 hour of operation, but in order to ensure optimum performance, it is recommended that the batteries should be replaced after 6-8 hours of use.

Input Connection and Input Selector Switches

The UB-4 is provided with a **3.5MM LOCKING JACK (29)** for connecting the audio input selected. Connect either the **INSTRUMENT CORD (34)**, or the **HEADWORN MIC (35)**, or **LAVALIER MIC (36)** as desired, according to the input selected.

(Note: Use only the input audio source as per the input selected with the input audio Input Selector Switch or the audio will not be optimal — a muddy or distorted sound may result.)

To secure the connection, turn the slip ring on the plug clockwise to thread it on the jack. To unplug, reverse the process. Slip the transmitter into a pocket or clip it onto your cloth or instrument strap (if using the UB-4 as an instrument transmitter.)

The UB-4 is equipped with two **INPUT SELECTOR SWITCHES (28)** located under the cover on the circuit board for selecting the type of audio input you will be supplying to the transmitter. Select from the choice of three positions: INSTRUMENT (for guitar, bass, etc.)/ HEADWORN MIC/ LAVALIER MIC. (G/H/L).

There are two switches, one with selectable position G, H, L and the other with G, HL.

To select inputs: (see chart on page 12)

A. Instrument — both switches to “G”

B. Headworn Mic — set one switch to “H” and the other to “H”

C. Lavalier Mic — set one switch to “L” and the other to “L”

Microphone Operation

To turn it on, slide the **OFF/STANDBY/ON SWITCH (33)** to the STANDBY position first (transmitter on, audio muted) or the ON position (transmitter and audio both on). The **POWER LED (30)** will stay on green and the LOW BAT indicator LED (bottom) will give a single flash in red, indicating usable battery strength. In case of dead or low battery, both LEDs will either not go on at all or will stay on continuously. During use, the LOW BAT will give a red flashing warning until it stays on continuously, indicating that the battery should be replaced with a fresh one. To preserve battery life, turn the transmitter off when not in use. To turn off, slide the **OFF/STANDBY/ON SWITCH (33)** to OFF position. No LEDs will light up. The unit is now off.

Level Trim Adjust

For optimum performance, an **INPUT LEVEL CONTROL (32)** for LT/HM is provided. Adjust the microphone gain by inserting a small slot-headed screwdriver to the adjustment knob, located on the top side of the transmitter unit, next to the mic input jack. Factory setting is 1/2 full. This is a setting to be used in most typical close microphone applications. Depending on the average distance between vocalist's mouth and microphone, you can adjust the level for your application. Set for maximum possible gain and headroom without noticeable distortion of the high level peaks. It is recommended that the level be set at about 1/2 maximum. Experiment and set for maximum possible gain without audible distortion on the high level peaks. on, indicating a received signal from the transmitter. When ready to speak, slide the switch to the ON position. Adjust the volume of the receiver as per in the receiver operating instruction section.

WA-125U OPERATING INSTRUCTIONS

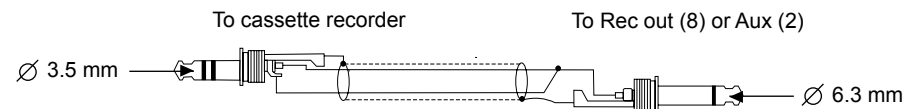
same frequencies that can possibly affect the sound even while the mic transmitter is on and being used). In normal operation, the **RF MUTE (Squelch) TRIMPOT (18)** should be set clockwise fully to the factory setting (Max. range). However, in areas of high RF activity, the **RF MUTE (Squelch) TRIMPOT (18)** may need to be readjusted to compensate for the adverse conditions in a particular location. Turning the **RF MUTE (Squelch) TRIMPOT (18)** too far counterclockwise will reduce the range, but yield a quieter squelch audio mute function. Note that when the **RF LED (5)** extinguishes during operation, the transmitter is out of range for that given location, and the user should move closer to the receiver to re-establish the radio link.

Attention:

1. If feedback (howling sound) occurs, try first turning down the **TREBLE CONTROL (6)**. If feedback still is present, try turning down the **VOLUME (5)** or repositioning the WA-125U with respect to the wired or wireless mic being used.
2. Keep line of sight between WA-125U receiver and wireless transmitter whenever possible to ensure optimum performance and maximum range.

Stereo/Mono Wiring Illustration (for use with AUX input and RECORD output)

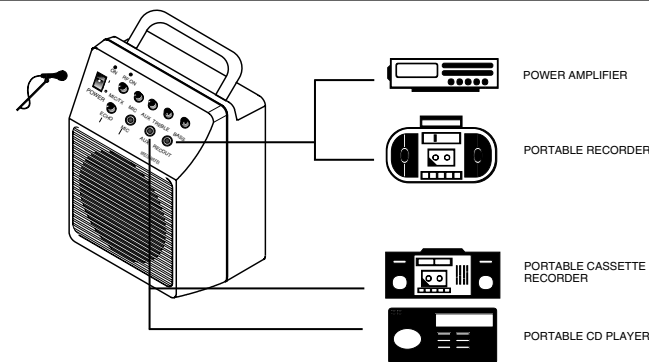
For stereo to mono conversion of the signals to the AUX input and mono to stereo connections from the RECORD output, wire the connecting cord as per the following illustration:



WA-125U Battery Charging Operation

The WA-125U has two ports in the rear compartment for charging a single **9V BATTERY (11)** and the optional RB-120 (12-15V) DC rechargeable battery. This battery charger can be used whenever the WA-125U is operated from AC power. If you are using rechargeable batteries in your transmitter, you can replace them as necessary with freshly charged ones, even during use. The discharged battery can immediately be put on charge. The charging **LED INDICATORS (10)** for **9V and (19)** for 12V will light RED whenever a battery is taking a charge. When the battery is fully charged, the indicator will turn GREEN.

Attention: This BATTERY CHARGER (11) can only be used for one 9V Ni-Cad or Ni-MH and (16) for one 12V rechargeable at the same time. Never use them for any other type of battery under any circumstance as this can result in damage to your unit and even danger from exploding batteries.



Stand Mounting the WA-125U

The WA-125U can be mounted on the optional MST-4B aluminum tripod stand for convenient placement in a higher position. Contact your dealer or the Nady service department. (See Page12)

UH-4 HANDHELD MICROPHONE TRANSMITTER

Transmitters set up

The UH-4 transmitter requires a single 9V battery to operate. To open the battery compartment, unscrew the **BATTERY COVER (22)** with a counter-clockwise turn and remove the cover, exposing the **BATTERY HOLDER (23)**. Insert a fresh 9V battery according to the correct polarity as indicated on the transmitter body. Screw cover back onto the microphone. Make sure the cover is screwed on completely. Fresh alkaline batteries can last for up to 10 hours of operation, but in order to ensure optimum performance, it is recommended that the batteries should be replaced after 6-8 hours of use.

Microphone Operation

To turn transmitter on, slide the **OFF/STANDBY/ON SWITCH (24)** to the STANDBY position first (transmitter on, audio muted) or the ON position (transmitter and audio both on). The **LOW BAT LED (25)** will give a single flash, indicating usable battery strength. In case of dead or low battery, the LED will either not go on at all or will stay on continuously. During use, if the LOW BAT stays on continuously, it is indicating that the battery should be replaced with a fresh one. To preserve battery life, turn the transmitter off when not in use. Keep line of sight between WA-125U receiver and wireless transmitter whenever possible to ensure optimum performance and maximum range.

Level Trim Adjust

For optimum performance, an **INPUT LEVEL CONTROL (21)** is provided for the transmitter. Adjust the microphone gain by inserting a small slot-headed screwdriver through the adjustment hole, located on the topside of the battery compartment, under the compartment cover. Factory setting is 1/2 full. This is a setting to be used in most typical close microphone applications. Depending on the average distance between vocalist's mouth and microphone, you can adjust the level for your application. Set for maximum possible gain and headroom without noticeable distortion of the high level peaks. It is recommended that the level be set at about 1/2 maximum. Experiment and set for maximum possible gain without audible distortion on the high level peaks.

Receiver Volume Controls Adjust

The PA sound output level is control by the volume control MIC/TX knob. If feedback (howling sound) occurs, try first turning down the **TREBLE CONTROL (7)**. If feedback still is present, try turning down the **VOLUME (6)** or repositioning the WA-125U with respect to the wired or wireless mic being used.

The handheld microphone is now ready to use. The RF ON indicator on the receiver should now be on, indicating a received signal from the transmitter. When ready to speak, slide the **OFF/STANDBY/ON SWITCH (24)** to the ON position. Adjust the volume of the receiver as outlined in the Receiver Operating Instructions section: Operating the WA-125U.

Notes:

- Turning down the gain too much can compromise the signal-to-noise and it is not recommended
- The battery compartment on the UH-4 functions as a built-in antenna. For proper operation, it should not be covered by the hand or touched during operation.
- Observe care in selecting P.A. volume, transmitter location and speaker placement so that acoustic feedback (howling or screeching) will be avoided.

UH-4 HANDHELD MICROPHONE TRANSMITTER

